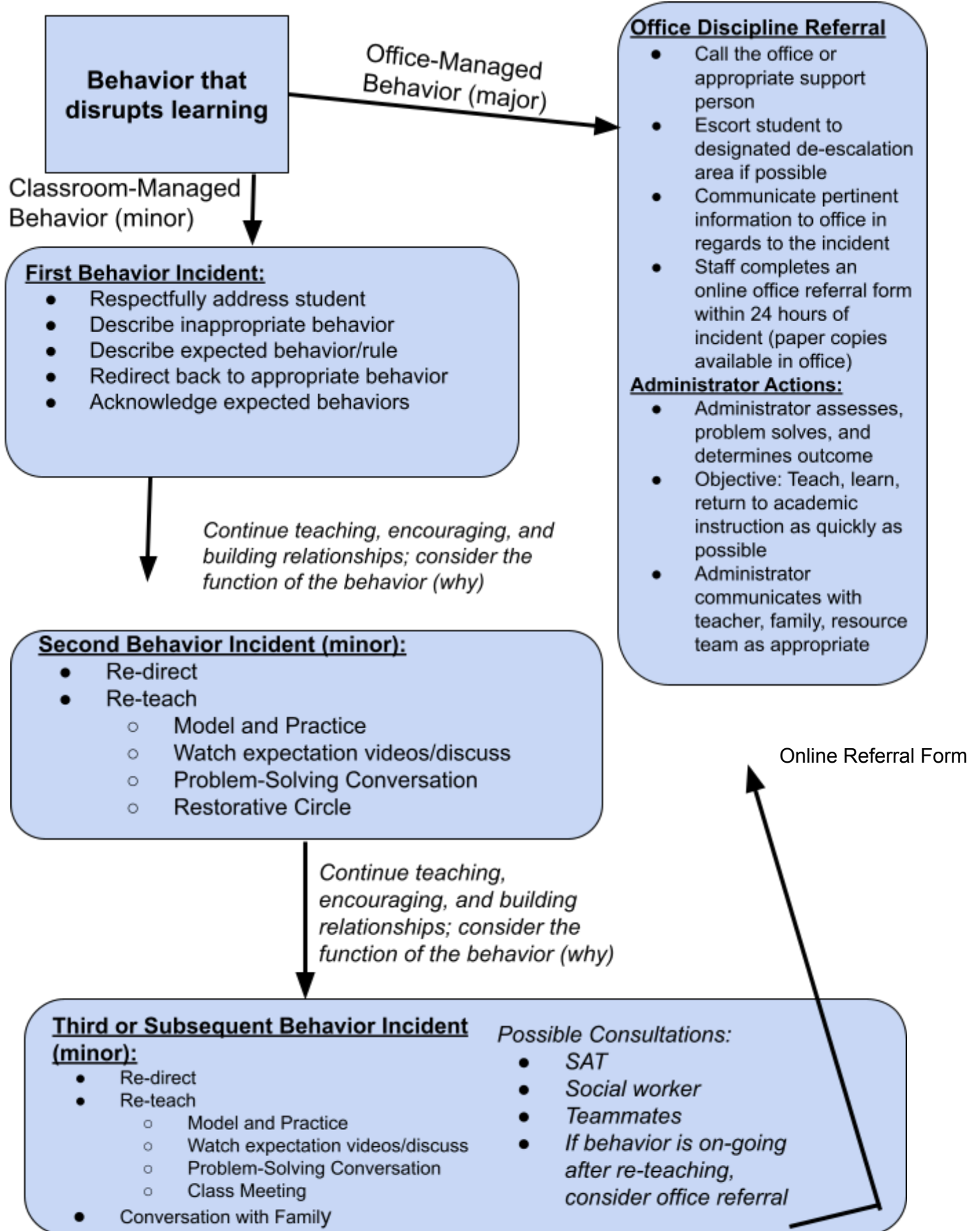


## Brainerd Public Schools Behavior Management Flow-chart



## Classroom Managed Behaviors (Minor) Examples

Disrespectful	Unsafe	Disruption	Physical Aggression	Bullying/Harassment	Academic Dishonesty
<ul style="list-style-type: none"> <li>• Not prepared for class</li> <li>• Swearing</li> <li>• Entering others lockers</li> <li>• Interrupting others</li> <li>• Lying</li> <li>• Peeking in bathroom stalls</li> </ul>	<ul style="list-style-type: none"> <li>• Running</li> <li>• Throwing objects</li> <li>• Finger guns/gestures to indicate using a weapon</li> <li>• Misusing objects</li> </ul>	<ul style="list-style-type: none"> <li>• Defiance</li> <li>• Blurting</li> <li>• Bothering others</li> <li>• Anxiety instances</li> <li>• Refusal to cooperate</li> <li>• Shutdowns</li> <li>• Non-compliance</li> <li>• Not listening</li> <li>• Avoiding class</li> <li>• Not using work time</li> <li>• Disruptive noises</li> </ul>	<ul style="list-style-type: none"> <li>• Loss of self-control</li> <li>• Impulsive actions                             <ul style="list-style-type: none"> <li>○ Pushing</li> <li>○ Shoving</li> <li>○ Kicking</li> </ul> </li> </ul>	<ul style="list-style-type: none"> <li>• Name calling</li> <li>• Rumors</li> <li>• Insulting others</li> <li>• Excluding others</li> <li>• Teasing/Taunting</li> </ul>	<ul style="list-style-type: none"> <li>• Plagiarism</li> <li>• Academic misrepresentation</li> </ul>

\*Data entry: entered into Google Form by the teacher

\* Non-Exclusionary Intervention: Explicit teaching and discussion or demonstration of expected behavior occurs with student

\* Consequence: Determined by adult handling the situation

\* Parent contact will be made by the teacher, when needed

\*Referral to the Office may occur if multiple Minor behavior infractions are exhibited or if repeated Minor offenses continue or if part of student BIP plan

## Office Managed Behaviors (Major) Examples

Disrespectful	Unsafe	Disruption	Physical Aggression	Bullying/Harassment	Academic Dishonesty
<ul style="list-style-type: none"> <li>• Destruction of property</li> <li>• Stealing</li> </ul>	<ul style="list-style-type: none"> <li>• Threats</li> <li>• Weapons</li> <li>• Throwing Objects</li> <li>• On-going inappropriate electronic and technology violations</li> </ul>	<ul style="list-style-type: none"> <li>• Continued disruption</li> <li>• Repeated outbursts</li> </ul>	<ul style="list-style-type: none"> <li>• Repeated action with intent to harm</li> </ul>	<ul style="list-style-type: none"> <li>• Threats of violence</li> <li>• Racial harassment</li> <li>• Sexual harassment</li> <li>• Repeated peeking in bathroom stalls</li> </ul>	<ul style="list-style-type: none"> <li>• Cheating</li> <li>• Collusion</li> <li>• Tampering with teacher materials</li> <li>• Tampering with grades</li> </ul>

\*Office Referral forms are completed by the adult who observes inappropriate behavior or action

\*Data entry: completed by main office

\*Non-Exclusionary Intervention: Explicit teaching, and discussion or demonstration of expected behavior occurs with student

\* Consequence: All office referrals will be judged based upon the severity of the behavior or action exhibited and a logical consequence that considers the severity and frequency of the offense and the age of the offender will be taken.

\*For major behavior incidents, parent contact will be made by the principal